

Installation Instructions

INSTRUCTIONS PERTAINING TO A RISK OF FIRE, OR INJURY TO PERSONS.

IMPORTANT SAFETY INSTRUCTIONS. SAVE THESE INSTRUCTIONS.

(Failure to follow the warnings and instructions on this sheet could result in fire, injury, failure of product, and/or voiding of warranty.)

- Do not touch luminaire while lamp is on. Turn off/unplug and allow to cool before replacing lamp.
- Lamp gets HOT quickly! Contact only switch/plug when turning on.
- Do not touch hot lens, body, cap, or knuckle.
- Keep lamp away from materials that may burn.
- Do not touch lamp at any time. Use a soft cloth. Oil from your skin may damage lamp.
- Do not operate the luminaire with damaged or missing parts.
- Do not install luminaire within 10 feet of a pool, spa, or fountain.
- Have fixture installed in accordance with all applicable installation codes and standards by a person familiar with the construction and operation of the fixture and the hazards involved.
- Use only cable properly rated for the application. Cable buried more than 6" must be suitable for direct burial. Direct burial cable may be ordered from Vision3 Lighting.
- MO1 housing is intended for use in wet locations only and should not be used where it may become submersed in water.
- All conduit must be properly attached to the housing and sealed at the fixture. Sealing the conduit entering each fixture prevents any leaks from traveling through the conduit system and causing catastrophic failures. Failure to cap unused conduit entry slip fittings or seal any conduit entering the housing will void the warranty.**

Un-assemble & Inspect:

- Unpack the MO1 Junction Mount with Transformer from its shipping container. Note: The MO1 Junction Mount with Transformer may be packaged partially un-assembled for ease of handling and shipping.
- Check that there are no damaged or missing components.
- Loosen the three Cap Screws using a 3/32" hex tool.
- Remove the Stake Cap from the Stake Body.

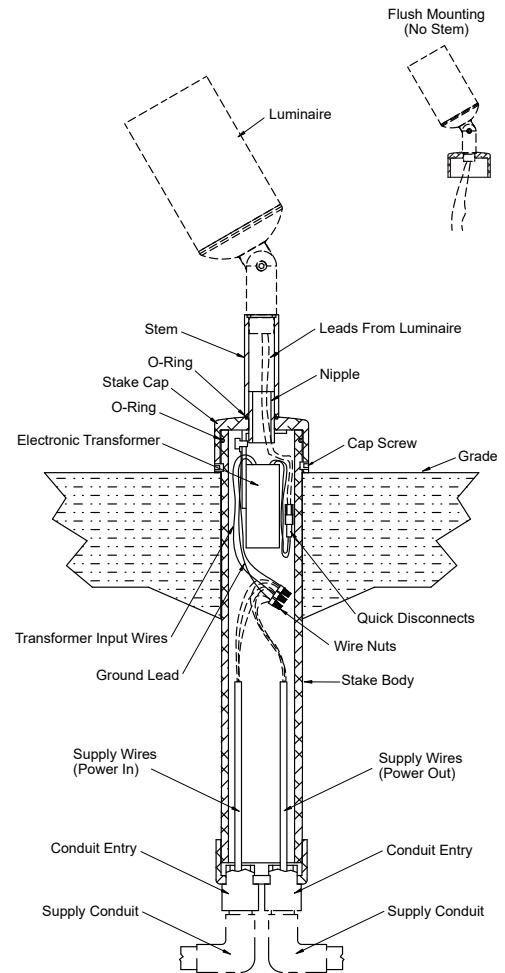
Install Stake Body In-grade:

- At the desired location, prepare an appropriate size hole for the Stake Body.
- Run conduit (not supplied) to the prepared hole. Note: Check all applicable building codes for requirements regarding landscape lighting conduit and cable.
- Place the Stake Body in-grade so that the line on the grade label is at grade. Note: the MO1 Junction Mount with Transformer must not be installed such that any part of the Stake Cap will be buried or touching any soil or ground covering. Failure to keep the Stake Cap from touching the ground will void warranty and may cause rapid corrosion of metal parts.
- Keeping the Stake Body at the appropriate level from Step 3, attach the Supply Conduit to the Conduit Entry fittings on the Stake Body using PVC cement appropriate for underground electrical conduit. Cap any unused Conduit Entry with the appropriate plug and PVC cement to prevent leaking. Seal conduit entering the Stake Body to prevent any water that may leak in to the conduit system from entering the Stake Body and causing catastrophic failures. **Note: All conduit must be sealed at the fixture. Failure to cap unused conduit entry slip fittings or seal any conduit entering the Stake Body will void the warranty.**
- Secure the Stake Body by filling in the hole. Make sure that the proper level from Step 3 is maintained.
- Feed enough supply wiring through the conduit into the Stake Body to facilitate connection with Luminaire.

Make electrical connections:

Note: Check that voltage being supplied from Transformer matches requirements on Luminaire label and that power being supplied from the Supply Wire matches requirements on Transformer label.

- Connect the Transformer power leads to the Power Supply Wires (black, white, green to hot, neutral, ground, respectively) using appropriate connectors (not supplied) per applicable codes.



Installation Instructions

INSTRUCTIONS PERTAINING TO A RISK OF FIRE, OR INJURY TO PERSONS.

IMPORTANT SAFETY INSTRUCTIONS. SAVE THESE INSTRUCTIONS.

(Failure to follow the warnings and instructions on this sheet could result in fire, injury, failure of product, and/or voiding of warranty.)

Re-assemble:

1. Carefully slip all wiring and connectors into the Stake Body.
2. Clean O-Ring and examine for any nicks or cuts.
3. Place the Stake Cap assembly on the Stake Body. Note: Twisting cap while pushing over O-Ring will ease installation.
4. Rotate the Stake Cap to aim. Refer to Luminaire installation instruction sheet for vertical aiming procedure.
5. Tighten the three Cap Screws using a 3/32" hex tool.

Power Module Replacement:

Note: Power Module illustration may look different than the one you received.

1. Remove power from fixture and let cool before touching. **Caution! Luminaire(s) may still be hot!**
2. Loosen the three S.S. Set Screws in the Junction Cap using a 3/32" hex tool – **do not remove screws!**
3. Remove the Junction Cap. Holding the Junction Body and twisting the Junction Cap slightly while removing reduces the risk of damaging the O-ring.
4. Inspect O-ring for damage. Replace if necessary.
5. Disconnect the Power Supply Wires from the Transformer.
6. Disconnect the Quick Disconnects from the Transformer to Luminaire.
7. Remove the two Bracket Screws holding the Power Module bracket to the Junction Cap and remove the Power Module.
8. Install the new Power Module and secure to the Stake Cap using the original two screws.
9. Reconnect the Quick Disconnects from the Transformer to Luminaire.
10. Make appropriate wire connections as explained in Make Electrical Connections above.
11. Reinstall the Junction Cap to the Junction body as explained in Re-assemble steps 1 thru 5 above.

